

# immediate family

A New American Play

*written by*

**PAUL OAKLEY STOVALL**

*directed by*

**PHYLICIA RASHĀD**





# About Face Youth Theatre

**July 13-29 at Red Tape Theatre**

**Thurs, Fri, Sat at 7pm, Sun at 3pm**

**Special performances at National Museum of Mexican Art on Aug 3 and 4**

Written by Sara Kerastas with the About Face Youth Ensemble

Directed by Eric Hoff

***WHAT'S THE T?* is a fast-paced, hilarious and poignant play based on the true stories and interviews of LGBTQA young people.**

The play explores how queer youth negotiate space in Chicago, with a special focus on trans experiences.

**About Face Youth Theatre** (AFYT) was developed in 1999 in response to the murder of Matthew Shepard as a safe space for lesbian, gay, bisexual, transgender and queer young people to tell their stories and create community. AFYT is an educational program designed to engage LGBTQ youth ages 14 through 21 in theatre and leadership development.

AFYT's programming includes year-round workshops focusing on the creation of oral history-based theatre, mainstage performance opportunities, open-mic events for young artists, and touring educational outreach plays to over 5,000 students annually. The exclusion of queer history and dialogue from schools, and the consistent discrimination and violence suffered by queer youth are the most immediate problems About Face Youth Theatre addresses with our multi-tiered programming.

AFYT provides mentorship and creates a positive environment in which many youth report they feel "connected" to a community for the first time. Achievements of the Youth Theatre include mainstage productions at the Goodman Theatre and Center on Halsted, touring productions across the Midwest, and civic honors at the local, regional, and national levels. The Youth Theatre is a recipient of the prestigious Human First Award by Horizon's Community Services and was one of just five organizations in the United States to receive a major capacity-building grant from The Diana, Princess of Wales Memorial Fund (U.S.).

---

**For information on About Face Theatre and to learn how to get involved, please visit [www.aboutfacetheatre.com](http://www.aboutfacetheatre.com).**

Paul Boskind     Ruth Hendel     Stephen Hendel

*by Special Arrangement with* Goodman Theatre  
*in Association with* About Face Theatre Company

*present*

# IMMEDIATE FAMILY

A New American Play

*by*

Paul Oakley Stovall

*directed by*

Phylicia Rashād

*with*

Greg Matthew Anderson · Kimm Beavers · Kamal Angelo Bolden  
Phillip James Brannon · J. Nicole Brooks · Shanésia Davis · Patrick Sarb  
Mateo R. Smith · Cynda Williams

*Sets Design*     *Costume Design*     *Lighting Design*     *Sound Design*  
John Iacovelli     Ana Kuzmanic     Heather Gilbert     Joshua Horvath

Incidental Music by Joshua Horvath

*Press*

Cathy Taylor Public Relations, Inc.

*Advertising & Marketing*

Allied Live, LLC

*Graphic Design*     *Community Engagement*  
Micah Logsdon     High Style Marketing

*Production Manager*     *Stage Manager*     *Casting*  
Jason Pikscher     Narda E. Alcorn     Cree Rankin

*General Manager*     *Company Manager*  
Martian Entertainment     Jennifer R. Graves

## *The Cast*



**Kamal Angelo  
Bolden**



**Phillip James  
Brannon**



**J. Nicole  
Brooks**



**Shanésia  
Davis**



**Patrick  
Sarb**



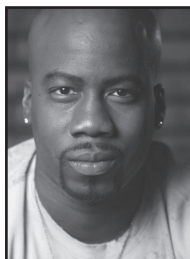
**Cynda  
Williams**



**Greg Matthew  
Anderson**



**Kimm  
Beavers**



**Mateo R.  
Smith**

Evy Bryant Jerome ..... Shanésia Davis  
 Tony Bryant ..... Kamal Angelo Bolden  
 Jesse Bryant, Jr. .... Phillip James Brannon  
 Nina Cole ..... J. Nicole Brooks  
 Ronnie Hahn ..... Cynda Williams  
 Kristian Silborn ..... Patrick Sarb

## *The Place*

The Bryant Home · Hyde Park, Chicago, Illinois · Now

U/S Kristian ..... Greg Matthew Anderson  
 U/S Evy, Nina & Ronnie ..... Kimm Beavers  
 U/S Jesse & Tony ..... Mateo R. Smith

Understudies will appear at certain performances when an announcement is made.

The use of any recording device, either audio or video, and the taking of photographs, either with or without flash is strictly prohibited.

## *From the Playwright*

---

Change.

In the past several years, this word has been fairly overused in our public discourse, becoming a bit of a punching bag. We scoff now when we hear “hope and change”; we shake our heads remembering “Change We Can Believe In.” But change (yes I’ve already written it four times) has always seemed a very private thing to me. Only the individual can wake up and feel something has changed within them. We look into the eyes of a loved one, a colleague, even a stranger and can sense a change in them—or, take note of a change in someone’s voice over the phone. Perhaps “Change” has lost its value because we’ve tried to make it bigger than it is. Change is small. Change is personal. There are constant, tiny shifts happening all around the country and the world. They feel large to us because they are happening from within. Attitudes are changing. Immediate Family, for me, is all about these tiny shifts, little tremors. I’d love to hear what you take away from it. Enjoy.

## Who's Who In The Cast

**Kamal Angelo Bolden (Tony)** was recently seen as "Black Man/Actor 2" in the world premiere of *We Are Proud to Present...* at Victory Gardens Theater. Since leaving Nashville for Chicago three years ago, Kamal has originated the roles of "Jackie Robinson" in the Chicago Children's Theatre's world premiere of *Jackie and Me*, and "Chad Deity" in Victory Gardens Theater's world premiere of the *Elaborate Entrance of Chad Deity*. He has also worked with Court Theatre (*Home*), Actors Theatre of Louisville (*The Elaborate Entrance of Chad Deity*) and won a Black Theatre Alliance Award for Best Leading Actor for his work in Athol Fugard's *The Island* at Remy Bumpo Theatre. Kamal has appeared in many independent films, commercials, and television shows. He holds a B.S. in Business Administration - Entrepreneurship from Bradley University.

**Phillip James Brannon (Jesse)** recently moved to NYC after beginning his career in Chicago and receiving his BFA in Acting from The Theatre School of DePaul University. Chicago credits: Goodman Theatre: *Joan Dark* (Linz, Austria, in conjunction with the Linz '09 Festival), *The Ballad of Emmett Till*, *The Cook*, *Oedipus Complex*, *A Christmas Carol*; Steppenwolf Theatre Company: the world premiere of *The March*, *The Brother/Sister Plays*; Chicago Shakespeare Theater: *As you Like It*, *Amadeus*, *Macbeth*, *Richard III*; Court Theatre: *Titus Andronicus*; Congo Square Theatre Company: *Elmina's Kitchen*; Remy Bumpo Theatre Company: *An Immigrant Class*; InFusion Theatre Company: *The Last Supper*. Regional credits: the world premiere of Robert O'Hara's *BootyCandy* at Woolly Mammoth Theatre Company in Washington D.C., Kansas City Repertory Theatre: *Harriet Jacobs*; Film: *Contagion*.

**J. Nicole Brooks (Nina)** is a native daughter of Chicago, and *Immediate Family* marks her return to the stage. Previous acting credits include Studs Terkel's *RACE* dir. by David Schwimmer, *Mary Stuart* dir. by JoAnne Akalitis and *Cider House*

*Rules* dir. by David Cromer. Brooks is an ensemble member at the Lookingglass Theatre. Scribe credits: *Black Diamond*, *The Years*, *The Locusts Have Eaten*, *Fedra*, *Shotgun Harriet* and *Midway Liquors*. Directing credits: *Black Diamond*, and *Mr. Rickey Calls A Meeting* (Lookingglass Theatre). Trophies: TCG Fox Fellowship Resident Actor, American Theatre Wing Tony Award, LA Ovation Best Supporting Actress, & BTAA Best Actress. Proud member of ITI-Worldwide & Actors Equity. Musings on life & Tom Foolery can be found at *Closed Captioning For The Jive Impaired* doctaslick.blogspot.com. Twitter handle @doctaslick

**Shanésia Davis (Evy)**, a proud member of Actors Equity, is honored to be a part of *Immediate Family*. Recent credits include Congo Square Theatre's World Premiere of *Brothers of the Dust* where she garnered both BTAA and BEA Best Actress awards. Other theatrical productions include: *The Steppenwolf*, *The Glass Menagerie*, *One Arm*, *Our Lady of 121st St.*, *Cymbeline*, Chicago Shakespeare Theatre; *Drowning Crow* (BTAA nom), *Black Star Line*, *The Ties That Bind Watermelon Rinds* (Jeff nom. BTAA nom), *The Visit and From the Mississippi Delta*, Goodman Theatre; *Permanent Collection*, *Bee-Luther-Hatchee Northlight*, *Comfortable Shoes*; Royal George (BTAA nom); *Othello*, *Fuente Ovejuna* Court Theatre. Regional credits include: *Bend*, Cleveland Playhouse; *The Syringa Tree* and *A Raisin in The Sun*, KC Repertory; *Intimate Apparel*, World Premiere Southcoast Repertory (NAACP Image Award nom.) Centerstage Baltimore; *Goodnight Desdemona*, *Good Morning Juliet*; *Hamlet* San Diego Rep.; Penumbra Theatre among others. She recently appeared in the ABC police drama *Detroit 187*. Other film and television credits include: *Damaged Goods*, *Morning Due* (Cannes Film Festival) *The Weatherman*, *Uncle Nino*, *The Last Word* (Life Sentence), *Chicago Cab* (Hell Cab), *With Honors*, *Early Edition* (series regular), *Missing Persons*, *Gabriel's Fire*, *Making a Case for Murder: the Howard Beach Story*.

## Who's Who In The Cast

Voice-overs include: McDonald's, Allstate, Charmin to name a few. Shanèsia teaches theatre at The Theatre School, and University of Illinois Chicago, where she directed *Our Lady of 121st Street* this season. This is for my other hearts: Nambi, Tatum and my family who makes me whole.

**Patrick Sarb (Kristian)** most recently appeared in *Short Shakespeare: Macbeth* at Chicago Shakespeare Theatre. Chicago credits include *Fiddler on the Roof* at Marriott Lincolnshire, *Animal Crackers* and *The Beard of Avon* at the Goodman, *Grey Gardens* at Northlight, *Unlock'd* at Ravinia, *Winesburg, Ohio* at Steppenwolf, *Tintypes* at American Theatre Company, *Big River* at Appletree, *Undone* and *Xena Lives!* at About Face, *All's Well That Ends Well*, *Midsummer Night's Dream*, and *Taming of the Shrew* with Lakeside Shakespeare Theatre, and Sondheim's *Saturday Night* at Pegasus Players. Regionally he appeared in the Las Vegas and Broadway companies of *Mamma Mia!*. He is a graduate of Northwestern University.

**Cynda Williams (Ronnie)** began a professional life of acting and singing after relocating to New York from her native Chicago. Her debut film *Mo' Better Blues* directed by Spike Lee, was a critical and commercial success. That film opened the door to her next performance in Carl Franklin's *One False Move*. Cynda has since appeared in numerous films including: *Tru Loved*, *Beautiful Loser*, *When Do We Eat*, *MacArthur Park*, *Relax...It's Just Sex*, *Caught Up* and *The Tie That Binds*. She has also performed memorable quality television roles including: *Hidden Blessings*, *The Courage To Love*, *Dorothy Dandridge*, *The Wedding* and *Tales Of The City*. Cynda also sings and acts on stage. She most recently appeared in *The Talented Tenth*, *Langston Is My Man*, *Hope Runs Eternal* and *Twilight In Los Angeles, 1992*, *Make Em' Laugh* and *Make Em' Laugh A Christmas Cabaret*.

**Greg Matthew Anderson (U/S Kristian)** is an Artistic Associate at Remy Bumpo

Theatre Company where credits include *Power*, *The Best Man*, *The Philadelphia Story*, *Bronte*, *On the Verge*, *The Marriage of Figaro*, *Les Liaisons Dangereuses*, *Night and Day*, *The Importance of Being Earnest*, and *Chesapeake*. He has appeared onstage at Northlight (*Sense and Sensibility*), the Goodman Theatre (*Rock 'N Roll*), Court Theatre (*Arcadia*), American Theatre Company (*Oklahoma!*), IO Theater (*A Moment Alone*), as well as at Next, Noble Fool, and Actors Revolution Theatre. Television: *The Chicago Code* (Fox), *Detroit 187* (ABC), the pilots *Matadors* (ABC/Sony) and *Underemployed* (MTV), as well as a recurring role on the short-lived *The Playboy Club* (NBC). Greg is a graduate of Duke University's Department of Theater Studies.

**Kimm Beavers (U/S Evy, Nina, and Ronnie)** was last seen in the world premiere of Ralph Ellison's *Invisible Man* at Court Theater and *The Trip* at ETA Theater (BTA award, Best Ensemble). Film Credits: *Lost Ones*, *Molly's Gift*, *Love Shorts*, & *Til Death Do Us Part*. Voiceover/Television/Print: Sprint, Coca Cola, Whirlpool, Walgreens, JC Penny. As a poet, Kimm is strongest when writing about love, self awareness, or spiritual growth and has performed at Clear Channel's *Big Jam Slow Jam* as well as opened for Sonia Sanchez and KRS 1. She has produced a spoken word album *Prose & Cons of a Love Affair* and a chat book "A Peace Of My Soul". Kimm got her B.A. in Speech and Theater Arts at Clark Atlanta University. Always excited to share the stage with great performers, Kimm believes the best way to grow is to surround yourself with people you can learn from and evolve with.

**Mateo R. Smith (U/S Jesse and Tony)** hails from the small Southern town of McComb, Mississippi. Mateo attended William Carey College in Hattiesburg, MS where he earned his BFA in Theatre. After graduation, Mateo was off to Abingdon, VA to begin his professional career at the historic Barter Theatre. While at Barter,

---

## Who's Who In The Cast

---

Mateo enjoyed roles in such plays as *The Tempest*, *The Importance of Being Earnest*, *To Kill a Mockingbird*, *South Pacific*, and *1776*, to name a few. In 2003, Mateo joined Theatre IV in Richmond, VA and spent 2 years on tour with Theatre for Young Audiences. In the fall of 2005, Mateo began studies at The Theatre School of DePaul University in Chicago, IL. After completing his MFA in Acting at DePaul, Mateo joined the Chicago theatre family, working with companies such as Steppenwolf, Chicago Shakespeare, MPAACT, and Victory Gardens Theatre Company among others. When not involved in artistic endeavors, Mateo enjoys lounging on the sofa with his 3lb Chihuahua "Mr. Belvedere" and toying with new recipes in his kitchen. Mateo is a proud member of Actor' Equity, Pi Kappa Delta and Alpha Pi Omega.

**Paul Oakley Stovall (Playwright)** has been writing since the age of 16 when his first volume of poetry, *another piece of hope*, was published by Trail Press. His first play, *Love Rules*, (which he also directed) received its world premiere at the Theatre School, DePaul University. His second play, *As Much As You Can* has been produced to acclaim in Chicago at Dog and Pony Theatre Company at New York's International Fringe Festival, at Celebration Theatre in Los Angeles (Hendel Productions and David Tarlow, Producers -2009 GLAAD Media Award nomination), and at the Diversionary Theatre in San Diego. A revised version is now titled *Immediate Family*. Paul Boskind with Steve and Ruth have also commissioned Paul to write the adapted screenplay with writing partner Laura Eason. Paul's play, *Ape*, received its world premiere at Dog and Pony in the fall of 2007 to critical praise, and it received a staged reading in Los Angeles at Celebration. His work has been developed at About Face Theatre (where his new work, *Billie and Billy* is in process) and San Francisco Playhouse. His musical, *Clear*, was featured at the 2010 Tony Award-winning O'Neill National Music Theatre Conference, the XYZ Festival in Chicago,

Joe's Pub, Dixon Place in NYC, and will be shown in Oct 2012 at Pritzker Pavilion's "In the Works" festival in Chicago where his cabaret act with Brad Simmons, *The Next Best Thing to Love*, just played, following its debut at the Arts Club of DC. As an actor, Paul most recently appeared in the world premiere of Ralph Ellison's *Invisible Man*. Other credits include *Shortbus* (dir, John Cameron Mitchell), the late Robert Altman's *The Company*, *Hustler WP* (dir, Craig Cobb - editor, *Sex and the City*), and *Lighthouse Lili* (dir, Tonya Pinkins), among others. At the O'Neill, Paul has appeared in Grammy-winner Marcus Hummon's *American Duet* and *Better* (Cabaret Conference), and *Red Eye of Love*, *MYTH*, *Max Understood*, and *.22 Caliber Mouth* (O'Neill NMTC); *Off-Broadway- Dessa Rose* (Lincoln Center world premiere), *Notebooks of Leonardo da Vinci* (2ST). Regional appearances include Goodman, Steppenwolf, Court (Chicago), About Face, Berkeley Rep, Seattle Rep, LaJolla Playhouse, Huntington, Penumbra, KCRep, Rep of St. Louis, Prince Music Theatre, Syracuse Stage, McCarter, among others. National tours: *RENT*, *Once on This Island*. International: *Otonari No Dasso-Hei* (Kinokuniya Hall-Tokyo). Paul currently serves as a White House Advance Associate for the Obama administration. Affiliations: Artistic Associate at Dog and Pony Theatre Company and About Face Theatre in Chicago.

**Phylcia Rashād (Director)** became a household name as Claire Huxtable in "The Cosby Show", and she teamed up with Bill Cosby in later years on television as Ruth Lucas on "Cosby". Rashād appeared on Broadway as Violet Weston in *August Osage County*, Big Mama in Tennessee Williams' *Cat on a Hot Tin Roof* (also London), Aunt Ester in August Wilson's *Gem Of The Ocean*, (Tony Award nomination) and Queen Britannia in Shakespeare's *Cymbeline* at Lincoln Center. She received both the Drama Desk and the Tony Award for Best Actress in a Play for the Broadway revival of Lorraine Hansberry's *A Raisin In The Sun*. She appears in Tyler Perry's

---

## Who's Who In The Cast

---

recently released film, *Good Deeds*, and starred in Perry's highly-acclaimed film version of Ntozake Shange's *For Colored Girls Who Have Considered Suicide When The Rainbow Is Enuf*. On stage, she also appeared in *Jelly's Last Jam*, *Into The Woods*, *Dreamgirls* and *The Wiz*. She made her directorial debut at the Seattle Repertory Theater with August Wilson's *Gem of the Ocean*. She helmed of The Ebony Repertory Theatre's production of *A Raisin in the Sun* in the Spring of 2011 and at the Kirk Douglas Theatre in Los Angeles in January 2012.

Respected in the academic world, Rashād is the first recipient of the Denzel Washington Chair in Theatre at Fordham University. She recently received an Honorary Doctorate from Spelman College where First Lady Michelle Obama delivered the 2011 commencement address. Rashad also holds Honorary Doctorates from Carnegie Mellon University, Howard University, Providence College, Morris Brown College, Clark Atlanta University, Barber Scotia College, St. Augustine College, and Brown University. She received the Texas Medal of Arts, the National Council of Negro Women's Dorothy L. Height Dream-maker Award, AFTRA's AMEE Award for Excellence in Entertainment, the Board of Directors of New York Women In Film and Television's Muse Award for Outstanding Vision and Achievement, Dallas Women In Film Topaz Award, Peoples' Choice Awards, several NAACP Image Awards, and the Pan African Film Festival's Lifetime Achievement Award. Rashad serves on the Advisory Board of the PRASAD Project and the Board of Directors of True Colors Theatre, the Broadway Inspirational Voices, The Actors Center, the Center for African American Studies at Princeton University, and the ADEPT Center which is steering the restoration of the historic Brainerd Institute. A native of Houston, Texas, Rashād graduated Magna Cum Laude from Howard University.

**John Iacovelli (Scenic Designer)** Emmy Award for *Peter Pan* starring Cathy Rigby

(A&E). Other Broadway: *The Twilight of The Gods*. National Tour: *Camelot*. Regional: over 300 productions: Geffen Playhouse, South Coast Repertory, Pasadena Playhouse, Berkeley Rep, Magic, Oregon Shakespeare Festival, Syracuse Stage, GeVa, and Seattle Rep (*The Gem of the Ocean* directed by Phylicia Rashad). Film: Production Designer on *Ruby in Paradise* starring Ashley Judd in her film debut. Art Director on *Honey, I Shrunk the Kids*. TV: *Beckett Directs Beckett: Endgame* with The San Quentin Drama Workshop, *The Old Settler* starring Phylicia Rashad and Debbie Allen, *The Gin Game* starring Mary Tyler Moore and Dick Van Dyke, *Babylon 5*, *Ed*, *Resurrection Blvd.*, *Lincoln Heights*. Website portfolio: [www.iacovelli.com](http://www.iacovelli.com).

**Heather Gilbert (Lighting Designer)** Chicago credits include: *RENT* (American Theatre Company/About Face Theatre), *The Real Thing*, *A Streetcar Named Desire* and *The Old Settler* (Writers' Theatre) *Home*, *Comedy of Errors* and *The Mystery of Irma Vep*, (Court Theatre), *Honus and Me*, *Esperanza Rising*, and *The Hundred Dresses*, (Chicago Children's Theatre), *The Homosexuals* (About Face Theatre), *Our Town* and *Cabaret* (Hypocrites), *The Better Half* (Lucky Plush Productions at MCA), and *A Separate Peace* (Steppenwolf). Regional credits include *A Streetcar Named Desire* (Broad Stage-LA, Williamstown Theatre Festival), *The Farnsworth Invention* (Alley Theatre) and Off-Broadway credits include *Our Town* (Barrow Street Theatre). Heather was a 1999-2001 recipient of the NEA/TCG Development Program Award. She serves as the Head of Lighting Design at Columbia College and received her MFA from The Theatre School at DePaul.

**Ana Kuzmanic (Costume Designer)** Broadway: Tony Award-winning *August: Osage County*, *Desire Under the Elms* and *Superior Donuts*. Regional: Berkeley Repertory Theatre, Chicago Shakespeare Theater, The Court, Geffen Playhouse, Goodman Theatre, Looking Glass Theatre, McCarter Theatre Center, Milwaukee Repertory

---

## Who's Who In The Cast

---

Theater, Steppenwolf, The Shakespeare Theatre Company, Trinity Repertory Company, Oregon Shakespeare Festival. Ana's design work is featured in the theater, film and entertainment industries around the country and internationally. From 1997 - 2002 she designed her fashion and jewelry line. Ms. Kuzmanic is a native of former Yugoslavia and an assistant professor of costume design at Northwestern University.

**Josh Horvath (Sound Designer/Incidental Music)** is a Chicago based sound designer, composer, and music producer. His designs have been heard locally at: The Goodman, Steppenwolf, Chicago Shakespeare, The Court, Northlight, Timeline, Lookingglass, About Face, and The House Theatre. Regionally: The Lincoln Center, The Kennedy Center, Long Wharf, Hartford Stage, The Alliance, Center Stage, Milwaukee Rep, Kansas City Rep, Center Theatre Group, and California Shakespeare. A four-time Jeff Award-winner; an LA Ovation award-winner; Joshua teaches sound design for theatre and film at Northwestern University, and is an artistic associate of Lookingglass Theatre.

**Nick Sandys (Fight Choreographer)** is a Fight Director with The Society of American Fight Directors, and his Jeff-Award-winning choreography has been seen all over Chicagoland as well as in New York and regionally. He has designed violence for The Metropolitan Opera, Lyric Opera of Chicago (Resident Fight Director), Goodman Theatre, Steppenwolf (including the Broadway bound *Who's Afraid of Virginia Woolf?*), Northlight, Victory Gardens, First Folio, Shattered Globe, and many more. He has taught combat at The Theatre School at DePaul University since 1995, and he recently became the Artistic Director of Remy Bumppo Theatre Company.

**Jesse Gaffney (Props Master)** Jesse has been building collecting and crafting props in the Chicago area for over three years. She is an artistic associate at 16th Street

Theatre and you may also have seen her work at Silk Road, Congo Square, Lifeline, A New Leaf, Chicago Children's, Apple Tree and Noble Fool Theatre Companies among others. Outside of Chicago Jesse worked for Allenberry Playhouse in Boiling Springs, PA, Stages St. Louis, and The Arrow Rock Lyceum in Arrow Rock, MO. You can follow her work and see how many props for her shows are created on her blog at [theatreprojects.blogspot.com](http://theatreprojects.blogspot.com). Thanks and love to Warwick.

**Eva Breneman (Dialect Coach)** Chicago credits: *The March, The Brother/Sister Plays, The Diary Of Anne Frank* (Steppenwolf); *Angels in America* (Court); *Elizabeth Rex, The Madness Of King George* (Chicago Shakespeare Theatre); *The Great Fire, Ethan Frome* (Lookingglass); *The Caretaker, Travels with My Aunt* (Writer's Theatre); *Enron, The History Boys* (Timeline); and multiple Jeff-nominated *The Light in the Piazza* (Theo Ubuque). Regional: *Around the World in 80 Days* (Centerstage Baltimore and Kansas City Repertory); *Mamma Mia!* (National Tour; Las Vegas). Television: *The Chicago Code* (Fox); *The Beast* (A&E). Eva is an Associate Artist at Timeline, and a Production Affiliate of Lookingglass.

**Narda E. Alcorn (Stage Manager)** is thrilled to be a part of *Immediate Family*. Her Chicago credits include: Chicago Symphony Orchestra's *Welcome Yule!* and the workshop of *Immediate Family*. Broadway: *Fences, Joe Turner's Come and Gone, Radio Golf, Gem of the Ocean, A Raisin In The Sun, Seven Guitars, and The Lion King*. Regional: Yale Rep, Huntington Theatre, Goodman Theatre, American Conservatory Theatre, Center Theatre Group, Alley Theatre, La Jolla Playhouse, McCarter Theatre and Crossroads Theatre Company. August Wilson's *20th Century* at the Kennedy Center for the Performing Arts. Narda is the Head of Stage Management and Associate Professor at The Theatre School at DePaul University.

## Who's Who In The Cast

**Sara Gammage (Assistant Stage Manager)** is delighted to be a part of *Immediate Family*. Chicago credits include *Flyin' West*, *What the Butler Saw*, *The First Breeze of Summer*, *Wait Until Dark*, *The Mystery of Irma Vep*, *The Illusion*, *Sizwe Banzi is Dead*, *Home*, *Orlando*, *Porgy and Bess*, *Spunk*, *An Iliad*, *Invisible Man* (Court Theatre). Other credits include productions with Chicago Shakespeare Theater, Greenhouse Theater, Theatre at the Center, Marriot Theatre, Apple Tree Theatre, and Redmoon Theater. She spent several seasons at Peninsula Players Theatre in Door County, WI; credits there include *A Little Night Music*, *Comic Potential*, *Wait Until Dark*, *Is He Dead?*, *Rumors*, and *The Lady's Not for Burning*. Sara is a proud graduate of Northwestern University.

**Jennifer R. Graves (Company Manager)** is happy to be at home in Chicago and have the opportunity to be a member of the *Immediate Family* company. Chicago credits include: *Wicked* and *A Christmas Story the Musical*. Broadway: *Riverdance*. Tours: *A Christmas Story the Musical*, *HAIR*, *August Osage County*, *Big River* (Deaf West), *Aurturo Brachetti*, *Riverdance*, *Dreamgirls*, *West Side Story* (USA, Canada, Japan), *Fiddler on the Roof* with Theodore Bikel, *Camelot* with Robert Goulet. Thanks to my mother and Lola.

**Jason Pikscher (Production Manager)** Jason's fabrications have been seen all over the country from the Kennedy Center to Six Flags, Microsoft to TLC, he has built scenery for just about everyone. In Chicago various nooks and crannies that you will find Jason's work include: *First Folio*, Chicago Shakespeare Theatre, Marriott Lincolnshire, Drury Lane, as well as he is the TD for the Broadway Series of the Paramount Theatre. Jason would like to thank his wife, Andrea for her love and tolerance of his work schedule.

**Martian Entertainment (General Management)** is a Tony Award-winning theatrical producing and general management firm.

Credits include: *The Normal Heart* (Tony Award, Drama Desk, Drama League and Outer Critics' Circle Awards); *On A Clear Day...* starring Harry Connick, Jr.; *Priscilla*, *Queen of the Desert*; *The Best Man* (starring James Earl Jones, Angela Lansbury, John Larroquette, Candice Bergen, Michael McKean, Eric McCormack); and many other musicals and plays, both on Broadway, Off-Broadway, on the West End, and National and International touring productions. [www.MartianEntertainment.com](http://www.MartianEntertainment.com)

**Cree Rankin (Casting)** has been the Casting Director at Court theatre since July 2002 and has coordinated and overseen the casting of over 50 Court Theatre productions. He has also coordinated Chicago casting projects for Kansas City Rep and Long Wharf Theatre Company in New Haven CT. From 1991 through 1997, Mr. Rankin was the assistant director of the Touring Theatre at George Street Playhouse (GSP) in New Brunswick, NJ which performed in schools all over New Jersey and in seven other states. He received his M.F.A. in directing from Tulane University.

**Cathy Taylor Public Relations, Inc. (Press)** led by Cathy Taylor and Schoeny Hixson, is a boutique public relations firm specializing in media relations for non-profit and commercial theater in Chicago. Among current clients are *Million Dollar Quartet*, *A Red Orchid*, American Theater Company, Black Ensemble, Chicago Shakespeare, Court, Lookingglass, Northlight, Profiles, Victory Gardens, Writers' and the League of Chicago Theatres. For additional information about CTPR: [www.cathytaylorpr.com](http://www.cathytaylorpr.com).

**Allied Live (Advertising & Marketing)** Allied Live is a full-service marketing and advertising firm catering to the arts, entertainment, tourism, hospitality, and retail industries, delivering integrated marketing strategies to drive sales and create brand awareness through multiple channels of communication, targeted directly to the

---

## Who's Who In The Cast

---

consumer. Current national touring clients include: *Billy Elliot the Musical*, *Mamma Mia!*, *West Side Story*, *In The Heights*, *Traces*, *Blue Man Group*, *STOMP*, *Irving Berlin's White Christmas*, *Catch Me if You Can*, *Elf*, *A Christmas Story the Musical*, and the upcoming *Tours of Ghost the Musical* and *Godspell*. Chicago clients include: *Million Dollar Quartet*, The Lyric Opera, Looking-glass Theatre, Chicago Opera Theater and Hubbard Street Dance.

**High Style Marketing & PR (Community Engagement)** A native Chicagoan, Jada Russell, is a graduate of the Fashion Institute of Technology NYC where she studied Marketing Communications & Public Relations. In 2001, she began her independent consulting career, later founding High Style Marketing & PR. As a public relations and marketing specialist she has executed national media strategies and promotional campaigns for clients that include Kanye West, Common and Dwyane Wade's foundations, The French Trade Commission, *FELA! The Musical*, Wal-Mart/E. Morris Communication, Celebrity Chef Julius Russell and eta Creative Arts Foundation. [www.highstylemarketing.com](http://www.highstylemarketing.com)

**Micah Logsdon (Graphic & Web Design)** is a graphic and web designer who focuses on a wide variety of print and digital design for the arts and artists. He has done branding, graphic, web, and a whole host of other design for Broadway, Off-Broadway and Regional theatres including, Stage Entertainment USA, New World Stages (NYC), *Gazillion Bubble Show* (NYC and National Tour), *Angelina Ballerina The Musical*, (NYC, Toronto) *Rooms*, *A Rock Musical*, *Wallenberg The Musical*, *Naked Boys Singing*, *Channelling Kevin Spacey*, (NYC Off-Broadway) and many more. He lives in Columbus, OH with his wonderful wife Lorraine and their giant-eared hounddog Patsy Cline. He holds a BFA from the University of Kentucky. [www.milograph.com](http://www.milograph.com)

**Paul Boskind (Producer)** Is the Founder and CEO of Deer Oaks - A nationwide

Behavioral Health Organization headquartered in San Antonio, Texas. As owner/producer of the Church Theatre in San Antonio, Paul discovered the power of using the theatrical arts to inspire, educate and touch lives on issues of equal rights for the GLBT community, prompting him to expand his interest to Broadway. As a result, he has produced several gay oriented, equality based shows, including The Tony® Award-winning play *The Normal Heart* (2011); Gore Vidal's *The Best Man* (Tony® Nomination, 2012); *Priscilla Queen Of The Desert*, and *On A Clear Day You Can See Forever* starring Harry Connick, Jr. Off-Broadway credits include: *BASH'd!*, an award-winning musical about marriage equality and gay bashing; and *The Temperamentals*, a play focusing on the early gay rights movement in the late 1950's. Paul is a psychologist, gay activist and philanthropist who serves on pro-equality national and state Boards, and is a Co-Owner of Martian Entertainment. He serves on the National Finance Committee of the DNC, and is a committed fundraiser for President Obama's re-election. Upcoming projects include the new rock musical *Bare*. Paul has found that producing theatre in Chicago, and the collaborative process with the playwright and the director on this show has been exhilarating. [www.MartianEntertainment.com](http://www.MartianEntertainment.com)

**Ruth Hendel (Producer)** Ruth has been on the producing teams of numerous plays and musicals on and Off-Broadway, including: *FELA!* (Broadway, London, Nigeria and World Tour); *Priscilla, Queen of the Desert*; *American Idiot*; *The Motherf\*\*ker with the Hat*; *House of Blue Leaves*; *Bengal Tiger at the Baghdad Zoo*; *Driving Miss Daisy*; *Red* (Tony); *Hamlet*; *A View From The Bridge*; *All My Sons*; *33 Variations*; *In The Heights* {assoc}; *Legally Blonde*; *Caroline, or Change*; *Raisin in the Sun*; *Golda's Balcony*; *Metamorphoses*; *Altar Boyz*; *Our Lady of 121st Street*; and *The Exonerated*. Many of these acclaimed productions have earned numerous Tony, Drama Desk, and Lortel nominations and awards. Her most

recent Broadway productions include *Death of a Salesman* and *Clybourne Park*. Ruth also serves on the boards of the LAByrnth Theater, The Play Company and the Yale School of Drama Advisory Board. She is also vice-chair of the Eugene O'Neill Theater Center in Waterford, CT. Ruth's honors and awards include the University of Connecticut School of Fine Arts Alumni award (2006), the Michael Mendelson award for commitment to excellence in theater from The New Group (2007), and the Louis B. Marshall award from the Jewish Theological Seminary (2010). Ruth graduated with honors from the University of Connecticut with a B.F.A. in Theater and received her Masters in Communications from Northwestern University.

**Stephen Hendel (Producer)** Mr. Hendel is a co-conceiver and lead producer (along with Ruth) of the Broadway musical *FELA!*, which premiered on Broadway in November 2009 and was also presented at the National Theater in London in November 2010. *FELA!* later began a world tour after a stop in Nigeria. *FELA!* is currently touring the United States. Mr. Hendel serves on several boards, including: the Eugene O'Neill Theater Center (Treasurer), the New Group, the Culture Project, St. Ann's Warehouse, and Afropop.org and serves on various advisory committees at Yale University including the Board of Advisors to the Yale School of Music and the University Council and the Board of the African Museum for Art.

**About Face Theatre (Associate Producer, Bonnie Metzgar, Artistic Director and Jason Held, Executive Director)** creates exceptional, innovative and adventurous plays to advance the national dialogue on gender and sexual identity and to challenge and entertain audiences in Chicago, across the country, and around the world. Founded in 1995 by Kyle Hall and Eric Rosen, About Face Theatre has emerged as a major force in Chicago theatre and is among the nation's most respected companies dedicated to the exploration of

gender and sexuality. Since its inception, About Face has developed and produced 50 new productions for Chicago audiences, including 45 world premieres. Plays developed at About Face have been seen across the country to critical acclaim and major recognition, including the Pulitzer Prize for Drama, the Tony Award for Best Play, 2 Black Theater Alliance Awards, 13 Joseph Jefferson awards, and 14 After Dark awards. Other Community honors include the Human First Award, the GLSEN Pathfinder Award, a Presidential Citation from the American Psychological Association, the Cook County Community Empowerment Award, induction into the Chicago Gay and Lesbian Hall of Fame, and the 2007 Equality award from the Human Rights Campaign. In addition to its award-winning mainstage performances, About Face is home to the nationally recognized About Face Youth Theatre, dedicated to the empowerment of LGBTQ (lesbian, gay, bisexual, transgendered, and questioning) youth and their allies through the creation of original productions and touring shows that reach up to 5,000 young people across the region each year. For more information, visit [www.aboutfacetheatre.com](http://www.aboutfacetheatre.com) or call 773-784-8565.

**The Goodman** Named the country's Best Regional Theatre by Time magazine (2003), Goodman Theatre has been internationally recognized for its artists, productions and educational programs since 1925. Artistic Director Robert Falls' and Executive Director Roche Schulfer's leadership has earned unparalleled artistic distinction and garnered hundreds of awards, including the Tony Award for Outstanding Regional Theatre (1992). Chicago's oldest and largest not-for-profit producing theater, the Goodman recently celebrated the tenth anniversary of its state-of-the-art two-theater complex in Chicago's downtown theater district, and has experienced unprecedented success over the past 10 years in its new facility, earning more than 90 awards for its productions and producing 25 new-work commissions.

# Who's Who In The Cast

## Staff for Immediate Family

### GENERAL MANAGEMENT

Martian Entertainment  
 Carl White Lauren Yates  
 Steven DeLuca Scott DeLaCruz  
 Patrick King Travis Huebel

### COMPANY MANAGER

Jennifer R. Graves

Stage Manager ..... Narda E. Alcorn  
 Assistant Stage Manager ..... Sara Gammage  
 Production Manager ..... Jason Pikscher  
 Assistant Scenic Designers ..... Robert Broadfoot  
 Claire Bennett, Kurt Sharp  
 Assistant Lighting Design ..... Claire Chrzan  
 Assistant Costume Design ..... Jeremy Floyd  
 Draper ..... Diane Fairchild  
 Draper/stitcher ..... Piper Robinson  
 Assistant Sound Design ..... Daniel Carlyon  
 Fight Choreographer ..... Nick Sandys  
 Dialect Coach ..... Eva Breneman  
 Prop Master/Shopper ..... Jesse Gaffney  
 Assistant to Paul Oakley Stovall ..... Jorge Nava  
 Production Assistants ..... Brent Eugene Beavers  
 Jennifer Levine  
 Press ..... Cathy Taylor Public Relations, Inc  
 Cathy Taylor & Schoenly Hixson  
 Advertising & Marketing ..... Allied Live  
 Laura Matalon, Suzanne Santos  
 Vanessa Jones & John Gilmour  
 About Face Theatre Marketing ..... Scott Bradley  
 Community Engagement ..... High Style Marketing & PR  
 Jada Russell, Wintana Tedla  
 Graphic & Web Design .. milograph ltd, Micah Logsdon  
 Group Sales ..... Group Theatre Tix  
 Tami J. Manton, Miguel Perez  
 Casting Director ..... Cree Rankin  
 Accountants ..... Rosenberg, Neuwirth & Kuchner  
 Mark A. D'Ambrosi, Sarah Krug  
 Banking ..... JP Morgan Chase Bank  
 Rita Pelosi, Grace J. Correa  
 Insurance ..... C & S International Insurance Brokers  
 Debra Kozee, Iris Lugo  
 Payroll ..... Castellana Services, Inc.  
 Lance Castellana, James Castellana, Norman Sewell  
 Housing Coordination ..... Jennifer R. Graves



The Actors and Stage Managers employed in this production are members of Actors' Equity Association, the union of professional actors and stage managers in the United States.



The Director is a member of the STAGE DIRECTORS AND CHOREOGRAPHERS SOCIETY, a national theatrical labor union.

## Credits

Scenery and Scenic Painting by F & D Scene Changes LTD, Calgary, Alberta Canada; Lighting and Sound Equipment provided by the Goodman Theatre; Original Paintings by Michael Lowe (mmclgallery.com)

Rehearsed at Ballet Chicago

## Staff for The Goodman

Artistic Director ..... Robert Falls  
 Executive Director ..... Roche Schulfer  
 General Manager ..... Peter Calibraro  
 Associate General Manager ..... John Collins  
 Production Manager ..... Scott Conn  
 Director of Marketing & PR ..... Lori Kleinerman  
 Director of Development ..... Dorlisa Martin  
 Publicity Director ..... Denise Schneider  
 Associate Producer ..... Steve Scott  
 Director of Education  
 & Community Engagement ..... Willa Taylor  
 Director of Ticket Services ..... Eric Schnitger

## Owen Run Crew

Wardrobe ..... Yvette Wesley  
 Light Board Operator ..... Patrick Hudson  
 Sound Board Operator ..... Stephanie Farina  
 Owen Floor Mnanager ..... Liz Hagan  
 Stage Hands ..... Jessica Stopak  
 Hayley Pilat

## Special Thanks

Paramount Theatre , Marc Condi - ACME HOTEL, Bob Bondlow - Ballet Chicago, Heidi McMath, Eileen Clancy, Birgit Wise and Caryn Klein, Lola, Jennifer Collin (Bridgestreet) Greg Reitz (Oakwood), Robert Falls, Roche Schulfer, Peter Calibraro, John Collins, Scott Conn, Erik Schnitger and the entire staff and crew at the Goodman Theatre, Leyton Morris and the entire staff and team of craftsmen and craftswomen at F&D Scenic, Steppenwolf Theatre Company, Roger Gobble, Marilyn Campbell, Laura Eason, Magnus Eriksson, Robyn Goodman, Michael Goldfried, Krissy Vanderwarker, David Tarlow, The Celebration Theatre, Sandy Matthews, Jason Baruch and Carter McGowan at Sendroff-Baruch LLP, Laura Davies, Patrik Silborn, Kim Osgood, Ruben Castro, Josh Earnest, Katie McCormick-Lelyveld, John Sanders, Zachary Paris, Catrice Armstrong, Ron OJ Parsons, Ballet Chicago, Jackie Taylor and Black Ensemble Theater, The Court Theatre, Rose Troche, Craig and Pamela Boyd, E. Faye Butler, Ernest Perry, Jr., Dana Stovall Wint, Paula Clinton, The First Lady Michelle Obama, and President Barack Obama.



The Designers at this Theatre are Represented by United Scenic Artists • Local USA 829 of the International Alliance of Theatrical Stage Employees



AMERICAN THEATER COMPANY & ABOUT FACE THEATRE CO-PRODUCTION

# RENT

BOOK, MUSIC AND LYRICS BY  
JONATHAN LARSON  
DIRECTED BY DAVID CROMER

WED-SAT @ 8PM  
SAT @ 3PM, SUN @ 2PM

"...never have seen a more  
moving, honest staging"  
-Chris Jones, Chicago Tribune



-Time Out Chicago



CALL 773.409.4125 OR VISIT [WWW.ATCWEB.ORG](http://WWW.ATCWEB.ORG)



# ABOUT FACE THEATRE

About Face Theatre creates exceptional, innovative, and adventurous plays to advance the national dialogue on gender and sexual identity, and to challenge and entertain audiences in Chicago, across the country, and around the world.

**Bonnie Metzgar, Artistic Director**  
**Jason L. Held, Executive Director**

Sara Kerastas, Education Programs Director  
Biz Wells, Development Manager

Youth Task Force: Karlo Manzo, Anna Rangos,  
Nemo Serges, Irene Tu  
Finance Services provided by Marie Johnson

**Board of Directors**  
William J. Michel, Rob Abernathy, Stephen Tubbs,  
Ivan Noah Uldall, Eddie Diaz, Christopher Gumprecht,  
Kyle Hall, Jason L. Held, Billy Lullo, Dr. Dwight A.  
McBride, Bonnie Metzgar, J. Mark Roberts, Eric  
Rosen, Benjamin Sprunger, Denis Weil

**Associate Board Members**  
Chip Allman, Keith Burgard, Richard Cordova, Scott  
Cramer, Erik Glenn, Jason Gorczyca, Kristen Kaza,  
Heather Lowe, John Lawrence, Mark Roberts,  
Matthew Scheer, Paul Oakley Stovall, Aaron D.  
Williams

**Artistic Associates**  
Patrick Andrews, Scott Bradley, Megan Carney, Philip  
Dawkins, Scott Duff, Mitchell Fain, Scott Ferguson,  
John Francisco, Sarah Gubbins, Eric Hoff, Jessica  
Hudson, David Hyman, Patricia Kane, Sara Kerastas,  
Elizabeth Ledo, Jacob Padron, Rebecca Rugg, Tanya  
Saracho, Kelli Simpkins, Arturo Soria, Benjamin  
Sprunger, Daniel Stermer, Paul Oakley Stovall,  
Donnell Williams



ImmediateFamilyPlay.com



[facebook.com/ImmediateFamily](https://facebook.com/ImmediateFamily)



[@ImmediateFam](https://twitter.com/ImmediateFam)

